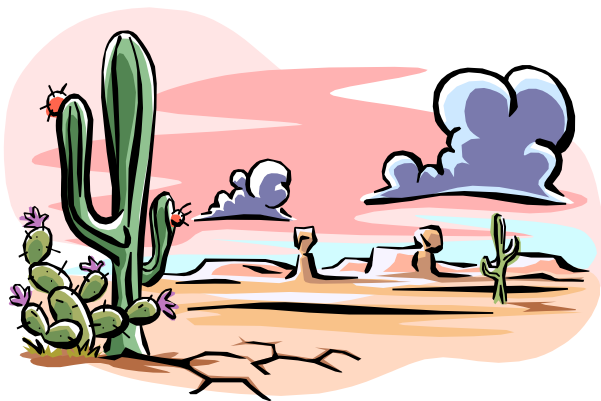


JOIN THE COOLEST PLAYERS AT THE HOTTEST REGIONAL!

PHOENIX DESERT EMPIRE REGIONAL

AUGUST 17-23, 2009

Sheraton Crescent Hotel, Phoenix AZ



Tournament Chair

Janet Newman
(480) 326-7144

j2newman@cox.net

Assistant Chairs

Charles Kelley
(480) 513-7966

cek99999@cox.net

JoAnne Lowe
(480) 836-7296

pnutlowe@cox.net

Partnerships

Page Tomkinson
(480) 948-9217

Kittypage3@aol.com

Director In Charge

Gary Zeiger

Sanction# R0908011

www.unit354.com

~ Tournament Highlights ~

- ◆ **Pro-Am** and **Charity Pairs** Monday
- ◆ **199er Pairs** Tues-Sat at 9 and 1
- ◆ **Choice Pairs** Tues, Fri, Sat
- ◆ **Fast Pairs** Wed and Thurs mornings
- ◆ **Open Pairs** Wed and Thurs prime time
- ◆ **Side Games** 3x daily
- ◆ **Knockouts** morning and primetime series
- ◆ **Compact KOs** Tues, Fri, Sat
- ◆ **Swiss Teams** Thurs and Sun
- ◆ First class hotel for only **\$80/night!**
- ◆ Renowned hospitality suite open daily
- ◆ Pre-duplicated boards for all pair games
- ◆ Sponsored by Unit 354 and District 17
- ◆ Daily speakers
- ◆ Gold points galore
- ◆ All sessions non-smoking
- ◆ Zero Tolerance policy in effect
- ◆ Free covered parking



Stratified Events:

A/B/C 0-750/750-2000/2000+
199ers Stratified at director's discretion

Entry Fees:

\$11.00 per session for paid up ACBL members
\$13.00 per session for all others

Strati-Flighted Events:

A/AX 0-5000/5000+
B/C/D 0-750/750-1250/1250-2000

Knockout Teams:

Bracketed by *average* MPs of all team members
Top bracket may be handicapped
Compact KO's limited to four players per team

Sheraton Crescent Hotel

(800) 423-4126 or (602) 943-8200
2620 West Dunlap, Phoenix AZ 85021
I-17 to Dunlap, Exit 207

◆ Special Room Rate \$80/night ◆

Reserve by July 18th ~
Ask for special bridge rate



District 17 Board of Directors



Bonnie Bagley, CO at large
Evelyn Colson, NM at large
Lesley Davis, Phoenix
Jerry Fleming, Ex-officio

Diane Graese, Las Vegas
Karin Griffin, Albuquerque
Darryl Helton, AZ at large
Allen Johnson, WY

Ralph Liguori, El Paso
Eugene McDougall, Tucson
Carolyn Newcomb, Denver
Jerry Ranney, Denver

Marianne Spanier, Phoenix
Dale Sweetwood, Mesa
John Van Ness, CO at large



PHOENIX DESERT EMPIRE REGIONAL ~ DAILY SCHEDULE OF EVENTS



MONDAY, AUG. 17

- ◆ 1:00 pm Stratified **CHARITY Pairs** (single session)
199ers PRO-AM Pairs
- ◆ 7:00 pm Stratified **CHARITY Pairs** (single session)
Agave Bracketed KO Teams (1 of 4)

TUESDAY, AUG. 18

- ◆ 9:00 am Morning Side Game Series (1 of 5)
199ers Stratified Pairs
Stratified **CHOICE* Pairs #1** (must play in 2 of 3)
Agave Bracketed KO Teams (2 of 4)
- ◆ 1:00 pm Afternoon Side Game Series (1 of 5)
199ers Stratified Pairs
Stratified **CHOICE* Pairs #2** (must play in 2 of 3)
Agave Bracketed KO Teams (3 of 4)
Barrel Compact KO Teams (1 of 2)
- ◆ 7:00 pm Evening Side Game Series (1 of 5)
Stratified **CHOICE* Pairs #3** (must play in 2 of 3)
Agave Bracketed KO Teams (4 of 4)
Barrel Compact KO Teams (2 of 2)
Stratified Open Swiss Teams (single session)

WEDNESDAY, AUG. 19

- ◆ 9:00 am Morning Side Game Series (2 of 5)
199ers Stratified Pairs
Stratified **FAST** Pairs** (1 of 2)
Cholla Bracketed KO Teams (1 of 4)
- ◆ 1:00 pm Afternoon Side Game Series (2 of 5)
199ers Stratified Pairs
Stratified **OPEN Pairs** (1 of 2)
Ocotillo Bracketed KO Teams (1 of 4)
- ◆ 7:00 pm Evening Side Game Series (2 of 5)
Stratified **OPEN Pairs** (2 of 2)
Ocotillo Bracketed KO Teams (2 of 4)
Stratified Open Swiss Teams (single session)

THURSDAY, AUG. 20

- ◆ 9:00 am Morning Side Game Series (3 of 5)
199ers Stratified Pairs
Stratified **FAST** Pairs** (2 of 2)
Cholla Bracketed KO Teams (2 of 4)
- ◆ 1:00 pm Afternoon Side Game Series (3 of 5)
199ers Stratified Pairs
Stratified **OPEN Pairs** (1 of 2)
Stratified Open Swiss Teams (1 of 2)

THURSDAY, AUG. 20 (cont'd)

- ◆ 7:00 pm **Ocotillo Bracketed KO Teams** (3 of 4)
Evening Side Game Series (3 of 5)
Stratified **OPEN Pairs** (2 of 2)
Stratified Open Swiss Teams (2 of 2)
Ocotillo Bracketed KO Teams (4 of 4)

FRIDAY, AUG. 21

- ◆ 9:00 am Morning Side Game Series (4 of 5)
199ers Stratified Pairs
Stratified **CHOICE* Pairs #1** (must play in 2 of 3)
Cholla Bracketed KO Teams (3 of 4)
Prickly Pear Compact KO Teams (1 of 2)
- ◆ 1:00 pm Afternoon Side Game Series (4 of 5)
199ers Stratified Pairs
Stratified **CHOICE* Pairs #2** (must play in 2 of 3)
Saguaro Bracketed KO Teams (1 of 4)
- ◆ 7:00 pm Evening Side Game Series (4 of 5)
Stratified **CHOICE* Pairs #3** (must play in 2 of 3)
Saguaro Bracketed KO Teams (2 of 4)
Stratified Open Swiss Teams (single session)

SATURDAY, AUG. 22

- ◆ 9:00 am Morning Side Game Series (5 of 5)
199ers Stratified Pairs
Stratified **CHOICE* Pairs #1** (must play in 2 of 3)
Cholla Bracketed KO Teams (4 of 4)
Prickly Pear Compact KO Teams (2 of 2)
- ◆ 1:00 pm Afternoon Side Game Series (5 of 5)
199ers Stratified Pairs
Stratified **CHOICE* Pairs #2** (must play in 2 of 3)
Saguaro Bracketed KO Teams (3 of 4)
Yucca Compact KO Teams (1 of 2)
- ◆ 7:00 pm Evening Side Game Series (5 of 5)
Stratified **CHOICE* Pairs #3** (must play in 2 of 3)
Saguaro Bracketed KO Teams (4 of 4)
Yucca Compact KO Teams (2 of 2)
Stratified Open Swiss Teams (single session)

SUNDAY, AUG. 23

- ◆ 10:00 am **Strati-Flighted Swiss Teams** (7 x 7 with no break)
199ers Stratified Swiss Teams (no break)
one session entries will be accepted for 199ers

- * **CHOICE Pairs** Must play in 2 out of 3 sessions that day
- ** **FAST Pairs** 24 boards with 5½ minutes allowed per board